



Proven in the Most Demanding Fire Departments Across the Nation

Force® 100' #500 Aerial Ladder

- *Rear Mount Tandem Axle Aerial*
- *Quint or Non-Quint Configurations*
- *Available with the Seagrave Marauder®, Attacker®, and Capitol® Custom Cab and Chassis*

Force[®] Aerial Ladder Features

- Sheave blocks are designed with Teflon impregnated into them for smooth operation
- Wear strips are easily accessible without removing the ladder from the truck
- Optional removable tip section for easy repairs and replacement
- Aerial devices are custom made by Seagrave, not outsourced
- Wider runways for easier climbing
- All steel Aerial ladder with I-Beam Construction
- Lower and narrower profile
- Storefront reduced top length option available



Ease, Speed, and Expanded Capabilities of Operations

- Aerial extends from 5 degrees below grade to 80 degrees above grade
- Water tanks of 300 or 500 gallons available on quint models
- Forward A-Frame outriggers and rear H-Jack outriggers for maximum stability and narrow front footprint
- Standard overall height of 136"-138"
- Maximum horizontal reach of 91'
- Wheelbases starting at 229.5"

500 lb. Tip Load

The Seagrave Force[®] features an aerial tip load capacity of 500 pounds when flowing up to 1,000 gallons of water per minute. Allowing multi-angle vantage points and extension length.

Seagrave Aerials

Seagrave aerials are known for being tough, dependable, and highly maneuverable. Seagrave aerials feature controls at your fingertips and independent outrigger controls. Turntables feature generous foot room and guard rails for optimum comfort and safety.



Seagrave
Since 1881

Protecting What Matters Most

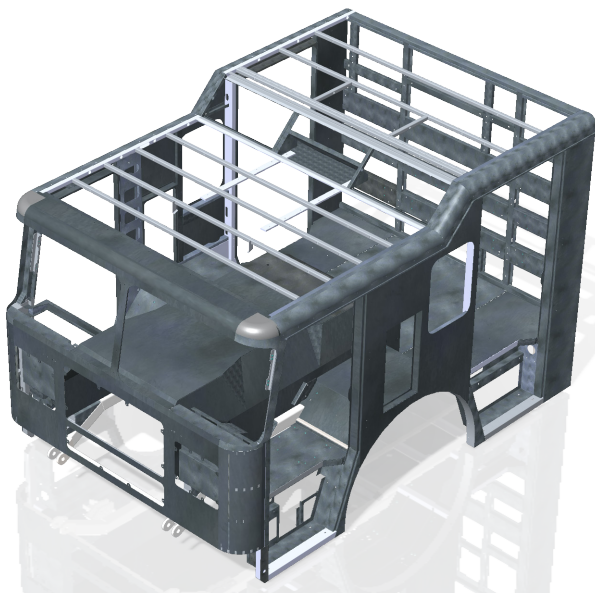
Seagrave Stainless Steel Cab Structures

By purchasing a Seagrave, you are showing the utmost regard for the safety of your department's personnel. Seagrave cabs are constructed of the highest quality materials and produced with exceptional craftsmanship. Seagrave cabs are built with the customers in mind. Seagrave cabs feature a robust safety cage designed to protect firefighters in the occurrence of a collision.

142" Attacker[®] / Split Cab



***141" Marauder[®] / 10" Raised Roof
25" Side Access Door***



***136" Capitol[®] / Level Roof
27" Side Access Door***



Cab Safety Cage Specifications:

- Roof Assembly: 1.25" Stainless Steel Tubing
- Front A Pillar: 2"x3" Stainless Steel Tubing
- Back Wall: 1.25" Stainless Steel Tubing
- Sides: 1.25" Stainless Steel Tubing

Sales Direct: 715-823-1975
800-SEAGRAVE (732-4728)
Fax: 715-823-5769
Clintonville, Wisconsin
www.seagrave.com

Contact Your Representative Today To
Configure Your Apparatus

